

HYDRAULIC HAND PUMP - PORTABLE

FOR HYDRAULIC ACTUATORS

APPLICATION:

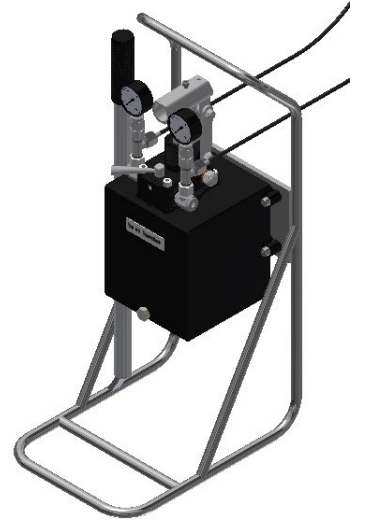
The hydraulic hand pump is suitable to operate double acting and single acting actuators.

DESCRIPTION:

The hydraulic hand pump is equipped with built-in directional control valve with lever, an adjustable safety valve and manometer on each tube. The safety valve protects the pump against too high pressure. If the pressure reaches approx. 130 bar, the safety valve will open.

OPERATION:

On top of the actuator is a local position indicator. The groove indicates the position of the butterfly valve's disc. On the actuator's control block we have the quick couplings "A" and "B". The operator connects one tube with quick coupling "A" and the other tube with "B". Putting pressure on "B" closes the butterfly valve. "A" opens the valve. Now the hand pump is ready for service. To operate the actuators use the hand lever. To change the rotary directions of the actuator switch the lever of the pilot valve to the other side.



HYDRAULIC OIL:

Use same kind of hydraulic oil as used in the remote controlled valve system.

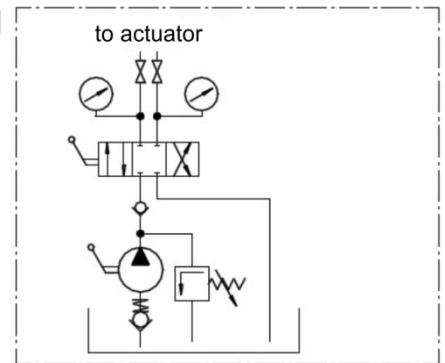
MAX. WORKING PRESSURE: 130 bar

TANK CAPACITY: 5 l

PUMP CAPACITY PER STROKE: 0,025 l

TOTAL WEIGHT WITH OIL: 17 kg

LENGTH OF TUBE: 3 m or 5m



Item	Description
1	Hydraulic hand pump
2*	Pressure gauge 0-160 bar
3	Frame
4*	Pressure gauge screw-in stud
5*	T-joint
6*	Pivoting threaded pipe angle
7	Tank
8	Hand pump lever
9*	Flexible high pressure tube

* Spare part

