

SANCONTROL

# REMOTE CONTROL VALVE SYSTEM



**SANDERMARINE**  
MARINE + OFFSHORE EQUIPMENT

**SANDERNAVY**  
NAVAL EQUIPMENT



## BETTER TAKE SANDER ON BOARD

### SANCONTROL Remote Control Valve System

Due to SANCONTROL's versatile design, valves may be operated by SANTORQUE hydraulic / electro-hydraulic actuators as well as by pneumatic or electric actuators – exactly meeting your requirements!

### Safe operation even in the harshest of conditions

- / Open deck -55°C to engine room +55°C
- / Hazardous atmosphere
- / Submerged IP68 installation in a tank possible

### Full integration for full control

SANDER's modular SANSYS control and monitoring system provides your crew with all required status information and corresponding options for action. SANSYS Pro combines a simple user interface with a hardwired or Modbus connection to ship's integrated automation system IAS. The more advanced SANSYS Chief / SANSYS Master additionally provides a graphic touch screen display and interacts with pumps, ballast water treatment system or external systems. It can be integrated with SANVALUE tank level gauging and bunker alarm, SANHEEL anti-heeling, SANDRAFT draft measuring systems etc.

### Expandable and customizable to your needs

#### / Add customized mimic monitoring and additional workstations

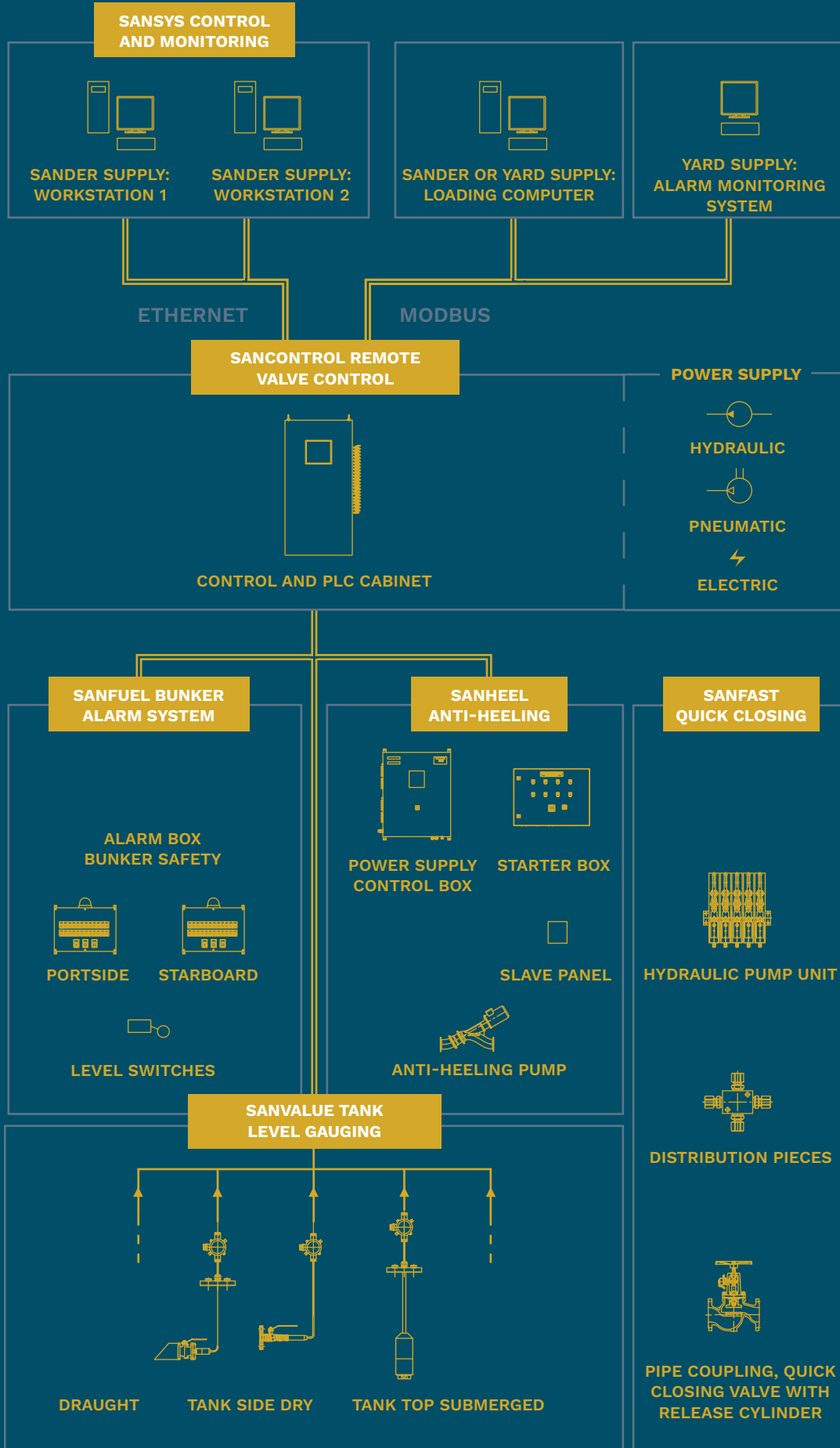
#### / Optional upgrades:

- / Increased operational safety: Several levels of redundancy (power supply, network, PLC etc.)
- / Simple operation: Mimic diagram monitoring
- / Easy maintenance: Integrated manuals, spare parts lists, technical drawings



We are certified according to  
**ISO 9001:** 2015  
**ISO 14001:** 2015

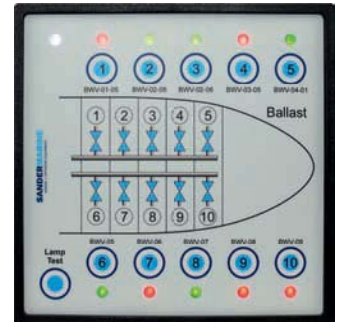
# CONTROLLING SANDER MARINE VALVES & ACTUATORS



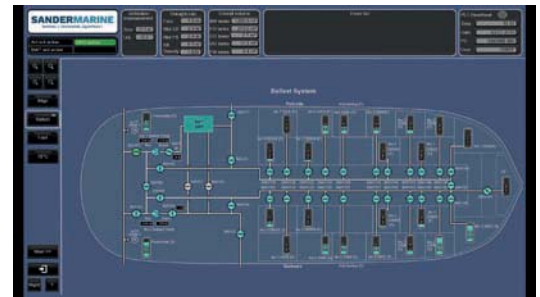
# INCREASE EFFICIENCY. REDUCE RISKS.

SANCONTROL – A typical setup

- / **Control cabinet**
- / **Hydraulic power unit (hydraulic system only)**
- / **External pressurized air supply (pneumatic system only)**
- / **Valves with**
  - / Actuators (hydraulic / electro-hydraulic / pneumatic / electric)
  - / Local power units (electro-hydraulic system only)
  - / Limit switches or position feedback
  - / Optional emergency operation devices (hand wheel / hand pump)
- / **Optional SANSYS Chief / SANSYS Master monitoring**
- / **Optional external workstations**
- / **Optional interfaces to**
  - / Vessel's integrated automation system IAS / alarm monitoring system AMS
  - / External pumps
  - / Ballast water treatment system
  - / Other SANDER fluid management systems



RCVS System – SANSYS Pro



RCVS System – SANSYS Master

✓ Our hydraulic equipment complies with the most recent **industry standard EN 15714-4**. This ensures long lifetime, easy maintenance and long-term availability of hydraulic spares and accessories.





## FULL CONTROL AT ANY TIME

### Directing the flow

A remote control valve system (RCVS) directs the transport of fluids (ballast or bilge water, fuel oil, cargo etc.) onboard a ship. Valves are opened or closed by hydraulic, electro-hydraulic, pneumatic or electric actuators. Limit switches (open/close) or positioners (0-100% open) report the valve's status back to the RCVS.

### Uncompromising safety and easy operation

Depending on class requirements, valves can be equipped with emergency operation via hand wheel or hand pump and/or include a fail-safe self-closing / self-opening feature.

Besides valve operation a RCVS regularly allows the operation and monitoring of external pumps or a ballast water treatment system.

The SANSYS control and monitoring system is used to operate the RCVS from the central control cabinet or decentralized locations such as bridge, cargo control room, pump room etc. The status of the RCVS can be visualized with a tabular overview of the valves or a customized graphic display of the complete piping system.

SANCONTROL may be linked to the vessel's integrated automation system (IAS) or alarm monitoring system (AMS) by wiring or bus interface.

**SANCONTROL RCVS is accepted by all major class societies, such as DNV-GL, LR, BV, RMRS etc.**

## SANDER MARINE WORLDWIDE

The Sander Marine is your one-stop solution provider for fluid management. The product range includes manual valves and fittings according to DIN, ANSI and JIS standard, most of which are available from stock. In-house certification according to DNV-GL, LR, RINA and RMRS class saves cost and reduces lead time for critical spare parts.

Based on warehouses as well as sales & service stations we can provide a quick and reliable spare parts supply and technical support in:

- / SWEDEN
- / GERMANY
- / SINGAPORE
- / DENMARK
- / NORWAY
- / DUBAI
- / INDIA
- / TURKEY
- / SPAIN
- / ROMANIA
- / RUSSIA



For new building vessels and retrofits we supply:

### SANSYS

Customizable control and monitoring system

### SANVALUE

Tank level gauging system incl. SOLAS flooding detection or bunker alarm system

### SANHEEL

Anti-heeling system

### SANDER NAVY

Valves and systems according to international Navy standards

### SANCONTROL

Hydr./el.-hydr./pneum./el. remote control valve system

### SANFAST

Pneumatic or hydraulic quick closing valve system

### SANTORQUE

Hydraulic and electro-hydraulic actuators and accessories

### SANDER MARINE

After sales support and services

**SANDERMARINE**  
MARINE + OFFSHORE EQUIPMENT

**SANDERNAVY**  
NAVAL EQUIPMENT

#### Sander Marine GmbH&Co.KG

Zum Panrepel 41 / 28307 Bremen / Germany

Phone: +49 421 48603-0 / Fax: +49 421 48603-89

E-mail: [info@sander-marine.com](mailto:info@sander-marine.com)

Web: [www.sander-marine.com](http://www.sander-marine.com)

E-mail: [info@sander-navy.com](mailto:info@sander-navy.com)

Web: [www.sander-navy.com](http://www.sander-navy.com)