

SANFAST

QUICK CLOSING VALVE SYSTEMS



SANDERMARINE
MARINE + OFFSHORE EQUIPMENT

SANDERNAVY
NAVAL EQUIPMENT



SANFAST. WHEN SAFETY MATTERS

Simple installation

/ Remote operated emergency system

/ Valve flange connections according to DIN, JIS, ANSI standards

/ Pneumatic version

/ Air receiver volume based on detailed system calculation

/ Various air supply pressures possible (10-30 bar)

/ Flexible installation, low space requirements

/ Hydraulic version

/ Multiple valves to be released by single pump unit

/ Open deck installation possible



We are certified according to

ISO 9001: 2015

ISO 14001: 2015

Easy to handle for the crew

/ Long maintenance intervals

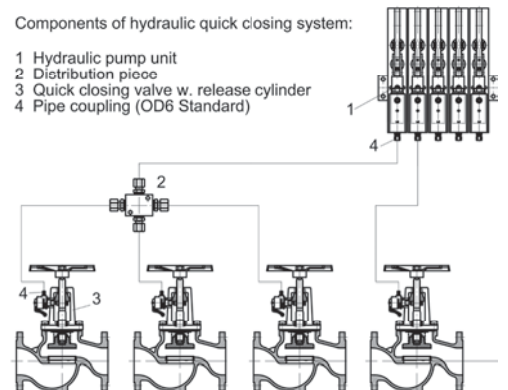
/ Low-pressure alarm of air supply reservoir to AMS (pneumatic system)

/ Compensating reservoir for easy refill and stop of leak oil (hydraulic system)

/ Optional position monitoring (internal or to IAS)

Components of hydraulic quick closing system:

- 1 Hydraulic pump unit
- 2 Distribution piece
- 3 Quick closing valve w. release cylinder
- 4 Pipe coupling (OD6 Standard)





STAND-ALONE IN CASE OF EMERGENCY

That's how it works

A SANFAST quick closing valve system (QCVS) is a stand-alone system for a safe isolation of fuel tanks in case of emergency. It has to be independent of the ship's power system. The release cabinet is located in a safe zone, outside of the engine room.

The shut-off valves of a QCVS are opened manually, tightening a spring. As soon as the release mechanism is triggered the spring tension closes the valve.

The most common release mechanisms are based on air pressure, hydraulic pressure or wire tension.

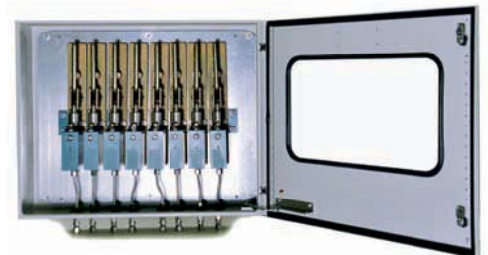
/ Pneumatic systems:

An air reservoir stores pressurized air sufficient to operate all valves at least twice. The crew can release it by the push of a button in the control cabinet to close single or groups of valves simultaneously.

/ Hydraulic systems:

The crew pulls the lever of a small hand pump inside the control cabinet to apply hydraulic pressure to single or groups of valves simultaneously.

Optional limit switches installed on the valves can confirm the safe closing of each fuel line by LED indication in the control cabinet and/or to the vessels IAS.



SANDER MARINE WORLDWIDE

The Sander Marine is your one-stop solution provider for fluid management. The product range includes manual valves and fittings according to DIN, ANSI and JIS standard, most of which are available from stock. In-house certification according to DNV-GL, LR, RINA and RMRS class saves cost and reduces lead time for critical spare parts.

Based on warehouses as well as sales & service stations we can provide a quick and reliable spare parts supply and technical support in:

- / SWEDEN
- / GERMANY
- / SINGAPORE
- / DENMARK
- / NORWAY
- / DUBAI
- / INDIA
- / TURKEY
- / SPAIN
- / ROMANIA
- / RUSSIA



For new building vessels and retrofits we supply:

SANSYS

Customizable control and monitoring system

SANVALUE

Tank level gauging system incl. SOLAS flooding detection or bunker alarm system

SANHEEL

Anti-heeling system

SANDER NAVY

Valves and systems according to international Navy standards

SANCONTROL

Hydr./el.-hydr./pneum./el. remote control valve system

SANFAST

Pneumatic or hydraulic quick closing valve system

SANTORQUE

Hydraulic and electro-hydraulic actuators and accessories

SANDER MARINE

After sales support and services

SANDERMARINE
MARINE + OFFSHORE EQUIPMENT

SANDERNAVY
NAVAL EQUIPMENT

Sander Marine GmbH&Co.KG

Zum Panrepel 41 / 28307 Bremen / Germany

Phone: +49 421 48603-0 / Fax: +49 421 48603-89

E-mail: info@sander-marine.com
Web: www.sander-marine.com

E-mail: info@sander-navy.com
Web: www.sander-navy.com